

Unit 2 Color By Number Solutions

1. $C(m) = 2m + 8$ ("m" is movies) \$5 and 6 movies

$C(6) = 2(6) + 8$

Cost of 6 movies = $12 + 8$

$C(6) = 20$

Next subtract.

\$20 cost

-\$5 she already has

needs \$15 more

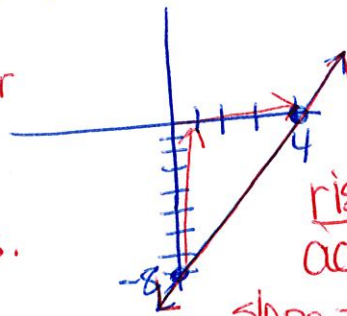
B. 15 → color yellow

2. count $\frac{\text{rise}}{\text{run}}$ on graph

$\frac{\text{rise } 1}{\text{run } 1} = \text{slope of } 1$

this slope is smaller

sketch your own line touching intercepts.



rise up 8 across 4 = 2

slope = 2

D. 1 → color green

3. y-intercept → start value or "b"

$T(a) = -.0018a + 100$

B. at 0 altitude the boiling point is 100
color → yellow green

4. $C(x) = 35 + 12.50x$
Spent \$122.50, so put substitute in for C(x)

$122.50 = 35 + 12.50x$ solve for x.

-35

$\frac{87.50}{12.50} = \frac{12.50x}{12.50}$

$7 = x$

B. 7 color red

5. Domain (x, y) dimes, qtrs add up to \$1.25

make table

since 0 works eliminate choices

~~0~~ ~~1~~

C. {0, 5, 10} → Red Orange

(0, 5) dimes, qtrs

yes... can use 5 quarters to get \$1.25

~~(1, 2)~~
~~.10~~ ~~.15~~

NO... can't make \$1.25
 Doesn't work

~~(2, 2)~~
~~.20~~ ~~.15~~

NO... can't make \$1.25
 Doesn't work

~~(3, 2)~~
~~.30~~ ~~.15~~

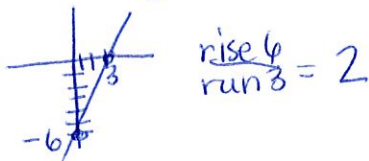
NO... can't make \$1.25
 Doesn't work

(4,)

6. $C(b) = 2b + 4$ b, books
 3 books, \$2
 $C(3) = 2(3) + 4$
 $= \$10$
 -2
 $\$8$ more

B. 8 → Blue

7. slope of line on graph $\frac{\text{rise}}{\text{run}} = 1$



D. 1 is smaller slope → Purple

8. $\frac{40 \text{ mi} - 20 \text{ mi}}{50 - 25 \text{ min}} = \frac{20 \text{ miles}}{25 \text{ min}} = \frac{4 \text{ miles}}{5 \text{ min}}$

B. 4 miles every 5 min. → Brown

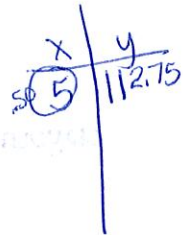
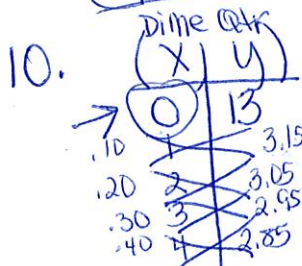
9. $C(m) = 40 + 9.25(m)$ x hours \$77
 Substitute

$77 = 40 + 9.25m$

$\frac{37}{9.25} = \frac{9.25m}{9.25}$

$4 = m$

D. m = 4 → purple



Eliminate B. and D.
 then Eliminate A.

C. {0, 5, 10, 15, 20, 25, 30} → light blue

KEY

